



Hector A. Cafferata Jr. Elementary School

Case Study



The Right Space,
At The Right Time,
For The Right Price™



Project Overview

Hector A. Cafferata Jr. Elementary School was originally designed in 2003 to accommodate 600 students but construction was delayed due to site permit complications. In January 2005 the project was revived with expanded capacity for 1,000 students and 73,000 sq ft. of buildings. The modular design of the project facilitated this size increase.

Ground breaking took place May 12, 2005 and less than two months later, all 144 modules were in place. The project progressed under a dual delineation of responsibilities with Target Builders of Ft. Myers doing the site development and Modtech responsible for the building. By the end of 2005 the school was completed and ready for occupancy.

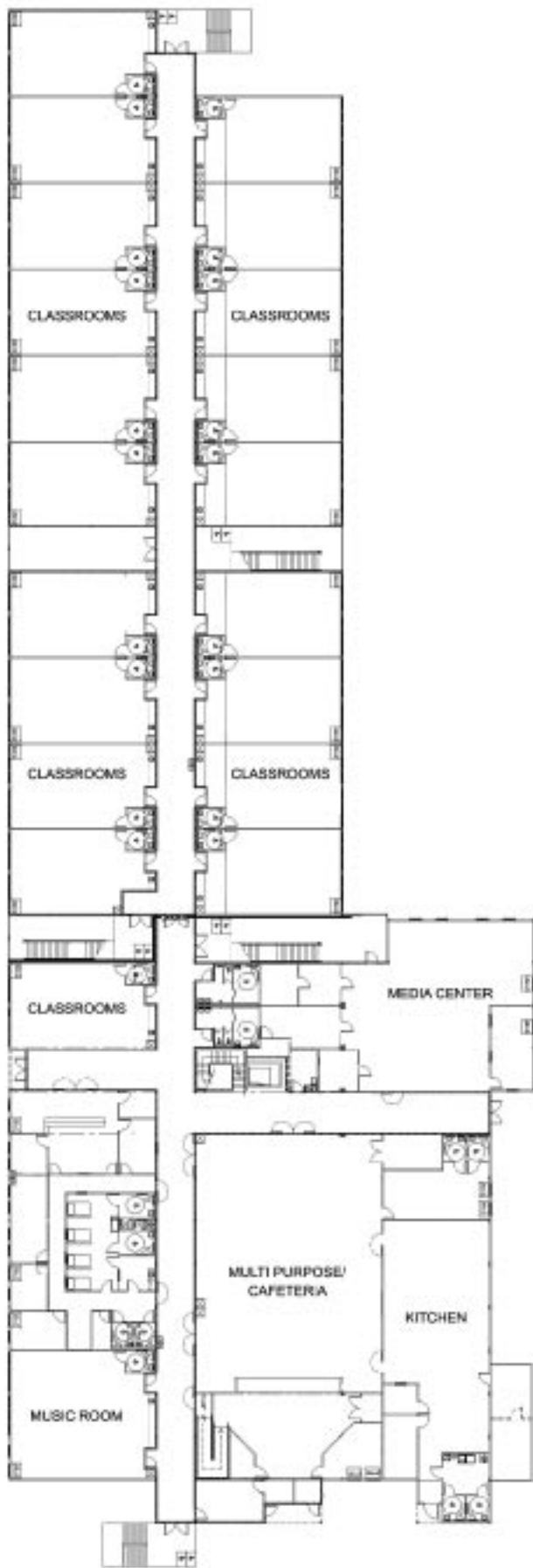
The completed campus includes 47 classrooms, media center, kitchen/cafeteria, multipurpose room and numerous restrooms. The school is also remarkable as it is one of the few multi-story modular schools in Florida and received no damage from Hurricane Wilma.

Project Team Members:

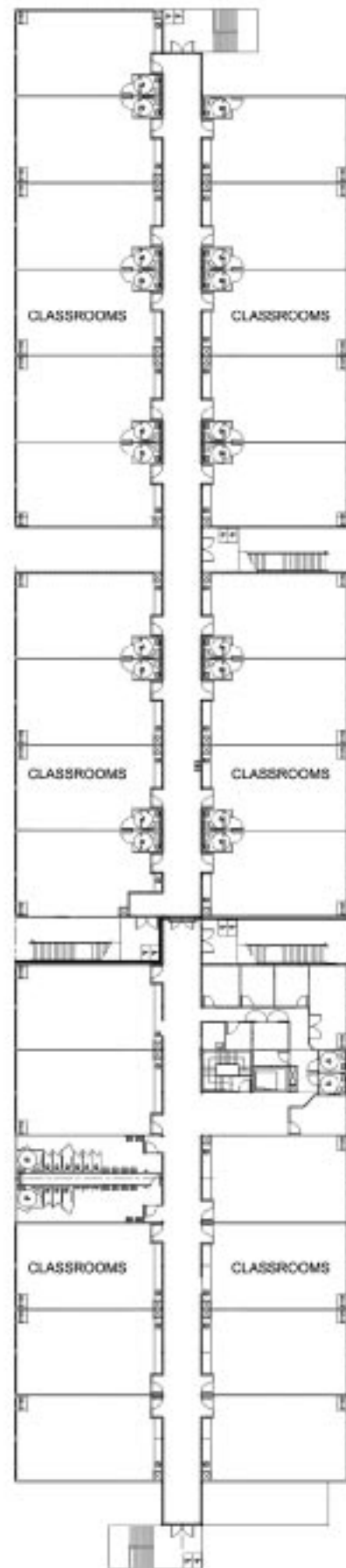
Modtech®
TKW Consulting Engineers
Robert Gregg, Architect
Target Builders



FIRST FLOOR



SECOND FLOOR



West Region

Southwest Region

South Central Region

Southeast Region

Toll free 1-888-929-0998 · www.modtech.com