

# EDUCATIONAL SPACE SOLUTIONS

STANDARD CLASSROOM 60 X 32 TWO STORY

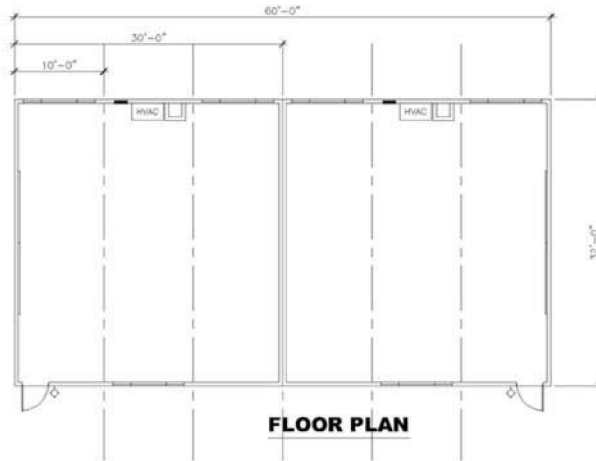


## THE MODTECH® ADVANTAGE

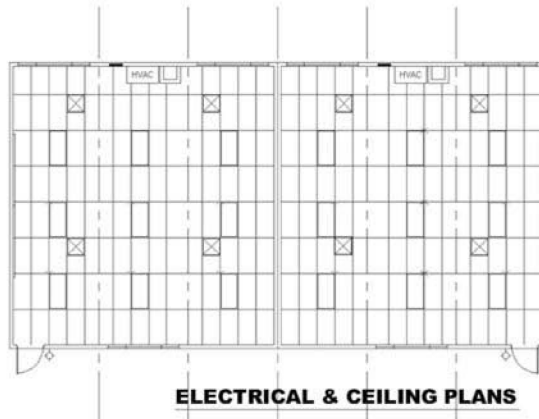
- Modtech® has been in business for over 20 years, we will be here when you need us!
- Modtech® Designs State-Of-The-Art Buildings that Meet or Exceed Applicable State Codes
- Full Range of Designs and possible options to Suit Individual Tastes
- Every Building is Manufactured with our Customers in Mind
- Buildings are manufactured in our factories for superior quality control & uniform/precise construction, eliminating weather delays
- "Synchronized building process" saves time and reduces site disruption
- Modtech® Offers Stress-Free Project Management and In-House Engineering

# EDUCATIONAL SPACE SOLUTIONS

## STANDARD CLASSROOM 60 X 32 TWO STORY



**FLOOR PLAN**



**ELECTRICAL & CEILING PLANS**



2830 BARRETT AVENUE  
PERRIS, CALIF. 92571

PH (951) 943-4014  
FAX (951) 443-3842

### STANDARD CLASSROOM "THE EDUCATOR SERIES"

MONO/DUAL SLOPE ROOF W/PARAPET  
60' X 32' TWO STORY

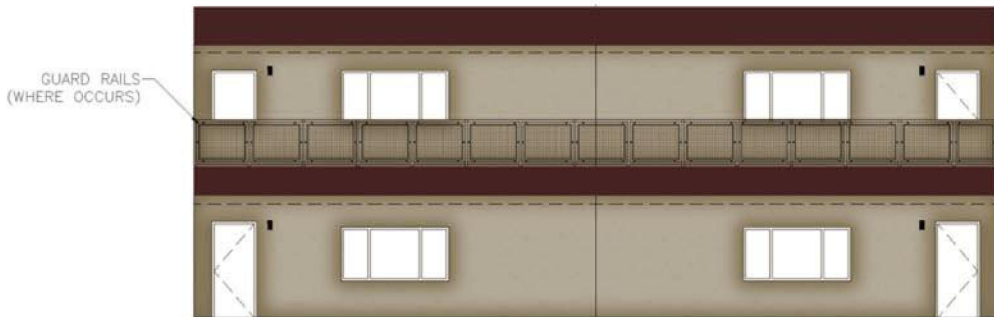
FLOOR/ELECTRICAL/CEILING PLANS

DATE: 12-07-2005  
DRAWN BY: PAW

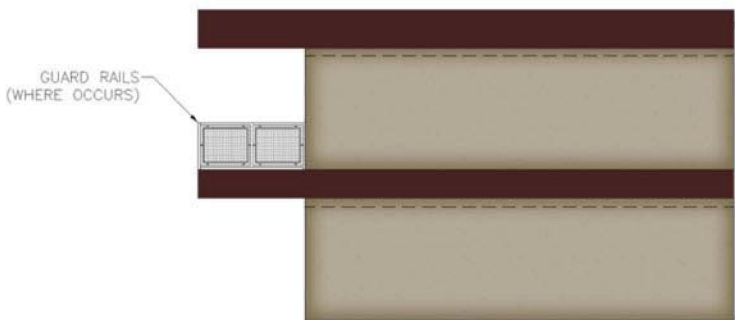
SD-1

# EDUCATIONAL SPACE SOLUTIONS

STANDARD CLASSROOM 60 X 32 TWO STORY



**FRONT ELEVATION**



**SIDE ELEVATION**

**MODTECH**  
Manufacturing and Construction  
2830 BARRETT AVENUE  
PERRIS, CALIF. 92571  
PH (951) 943-4014  
FAX (951) 443-3642

**STANDARD CLASSROOM  
"THE EDUCATOR SERIES"**

MONO SLOPE ROOF W/PARAPET  
60' X 32' TWO STORY  
EXTERIOR ELEVATIONS

DATE: 12-07-2005  
DRAWN BY: PAW

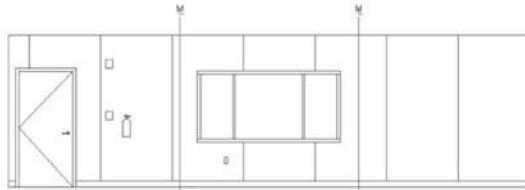
SD-2

# EDUCATIONAL SPACE SOLUTIONS

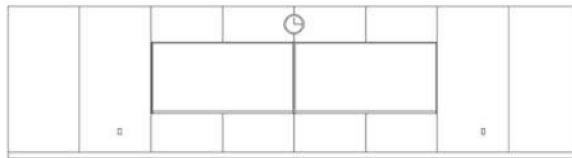
STANDARD CLASSROOM 60 X 32 TWO STORY



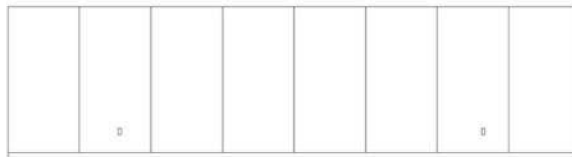
**REAR ELEVATION**



**FRONT ELEVATION**



**SIDE ELEVATION**



**SIDE ELEVATION**



2830 BARRETT AVENUE  
PERRIS, CALIF. 92571

PH (951) 943-4014  
FAX (951) 443-3642

## STANDARD CLASSROOM "THE EDUCATOR SERIES"

MONO SLOPE ROOF W/PARAPET  
60' X 32' TWO STORY

TYPICAL INTERIOR ELEVATIONS

DATE: 12-07-2005  
DRAWN BY: PAW

**SD-3**

### Building Description - 60 x 32 Two Story - Option "A"

(mono slope roof w/parapet)  
 Construction Type: V-N w/sprinklers  
 Wind Load 80mph exposure "C"  
 Seismic Zone 4

Roof live load: 20PSF  
 Floor live load: 50 + 20 PSF  
 Square footage: 3840 s.f. (4) 24 x 40 classrooms  
 Occupancy: E-1

#### **Features:**

#### **Building Foundation**

- Concrete – Below grade foundation 50 + 20lb. floor load

#### **Building Exterior**

- Parapet, minimum height front and rear
- 8'-0" front overhang (enclosed soffit)
- No rear overhang
- 26 GA. scuppers and downspouts at rear of building
- Stucco
- (2) Clear anodized aluminum 8040 fixed center pane and two outside sliders (xox) exterior windows, 46% light transmission, tempered glass, dual glazed
- (1) 3070 18GA. (Curries) HM Door, w/HM 16GA. welded door frame (right or left hand door)

- Door hardware – Schlage lever D70, Norton door closer and Pemco threshold
- (1) Exterior porch light fixture (photo cell)
- (2) Exterior emergency lights per building, upstairs at each corner (bug eyes)
- (2) Exterior emergency exits signs ((1) at each set of stairs – second floor)
- (1) J-box for exterior fire alarm horn (device by others)
- (1) 1 ¼" Electrical stub-out from interior electrical panel
- (1) 6"x 6"x 4" Exterior gutter box
- Exterior wall insulation R13
- Wood Studs (2 x 6 and 2 x 8)
- Roof insulation R19
- Floor insulation R11

- (1) Elevator (additional to building cost)
- Balcony guardrail, stairs and landing (painted wire mesh design)
- Grounding – Building frame by Modtech (total building, ground rod, and equipment connections, by site contractor or district) Concrete flat work by others

#### **Building Roof**

- Built-up roof w/crickets to allow for drainage

## **Building Interior**

- 1 1/8" T & G plywood sub-floor, seamless woven polyflex bottom board for moisture protection
- Flooring - Carpet (Cambridge-Wynford III), price group 1, glue down, Density 4600, 26oz
- 4" Rubber wall base
- 8'-6" Ceiling height
- (1) HVAC 3.5 ton, (10 seer 8.6 EER) (based on Marv Air Scholar II or equal - other models available) heat pump interior floor mount - Marv Air Scholar II or equal, flex duct and 7 day programmable thermostat (White Rodgers)
- Wall covering - (Chatfield-Clarke) 1/2" vinyl tackboard, 15 oz., class 1, over 1/2" gypsum board backing, price group 1, (Opal and Misty Grey in stock)
- Interior Window Trim (simulated wood)
- (1) 100 AMP. Electrical panel
- (1) Interior illuminated exit sign
- (6) Dual wall receptacles - color white or ivory
- (1) Electric clock
- (1) J-box, conduit and pull string for fire alarm strobe/horn (device by others)
- (1) J-box, conduit and pull string for fire alarm pull station (device by others)
- (2) 4 Plex J-box, conduit and pull string for heat detectors (device by others)
- (2) 4 Plex J-box, conduit and pull string for smoke detectors (device by others)
- (1) Fire extinguisher - wall mount (5lb. dry chemical)
- (2) 8040 Marker boards "Dry wipe" high pressure laminate
- (3) Single pole wall light switches
- (10) 2 x 4 (3) tube T-8 fluorescent recessed light fixture w/occupancy sensor T-Grid ceiling - heavy duty (Armstrong or equal) - 2 x 4 acoustical lay in grid panels (Armstrong or equal)

## **Possible options**

- Expandable (10 x 32 modules up to a maximum width of 90 x 32)
- Flooring (i.e. carpet, sheet vinyl and VCT)
- HVAC - seer/tonnage
- Low Voltage - data and phones (conduit/pullstring and j-boxes only)
- 6 x 6 x 6 signal box
- TV bracket and support
- Fire Extinguisher cabinet
- Cabinetry
- Paint and/or exterior color
- Hardware
- Doors and windows
- Electrical
- Lighting
- Marker board (porcelain) Vinyl tackboard (upgrade)

***"The Right Space, At The Right Time, For  
The Right Price™"***

### **West Region**

2830 Barrett Ave.  
Perris, CA 92571  
Phone: (951) 943-4014  
Fax: (951) 940-0427

### **Southwest Region**

5301 W. Madison St.  
Phoenix, AZ 85043  
Phone: (602) 233-1903  
Fax: (602) 233-9458

### **Southeast Region**

1602 Industrial Park Dr.  
Plant City, FL 33566  
Phone: (813) 719-6007  
Fax: (813) 759-0576

### **South Central Region**

310 Gibbs Blvd.  
Glen Rose, TX 76043  
Phone: (254) 897-3072  
Fax: (254) 897-3439

Toll free 888-929-0998  
[www.modtech.com](http://www.modtech.com)